

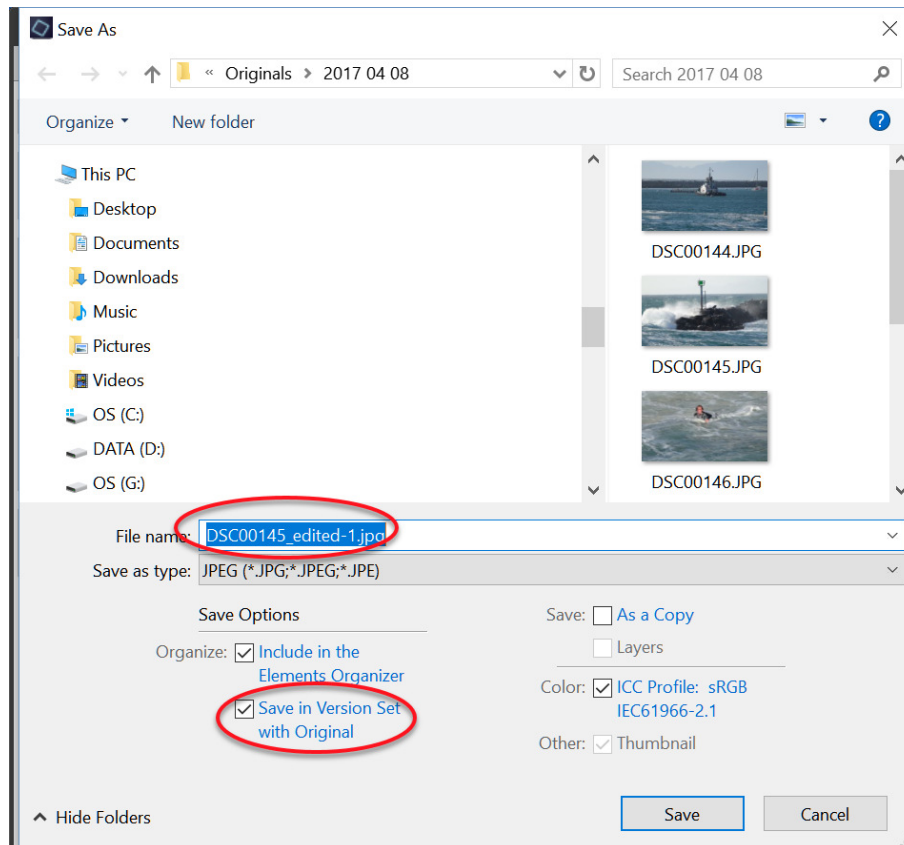
Saving Edited Photos in Photoshop Elements 15

This tutorial explains how to save your photo in Photoshop Elements 15 after you have enhanced your original. The steps and figures are for the Expert Edit mode of PSE 15, but they are essentially the same if you are using the Quick or Guided workspaces. In addition, the steps are for saving the enhanced photo into the same folder where the original is stored, forming a Version Set when viewed in the Organizer. **If you store your edited images in a different folder, you will need to substitute its name where appropriate.**

1. From the Menu in the Expert Photo Editor, click on File > Save as... as shown in the figure below. You use File > Save as... the first time you save an edited version of your original, because you do not want to write over the original file. Your originals should be treated as negatives from a film camera.



2. The Save As dialog opens and shows the contents of the folder where the original image is stored, Originals > 2017 04 08 in this example. If you wish to store the edited version in a different folder, you could scroll to the desired folder in the left column and navigate to the desired folder.



3. In this example, we are going to save the edited photo as a JPEG (.jpg) image.
4. We are going to include the image in the Organizer and save the edited image as a Version Set. Note, by saving the image as a Version Set, we do not need to name the edited file. It is automatically given the name OriginalFileName_edited-1.jpg. Upon returning to the Organizer, the edited version will be stacked on top of the original image with the Version Set icon in the upper right corner of the thumbnail. The “.jpg” is also added based on the selected file type on the Format line.
5. Click Save.
6. In the JPEG Options dialog box that opens, Set the highest quality value to **12**, and ensure that either the Baseline (“Standard”) or the Baseline Optimized option is selected. Then Click Ok. Remember, to save the edited image as a JPEG, we first make sure is only a single layer first. The JPEG file format does not support layers.

