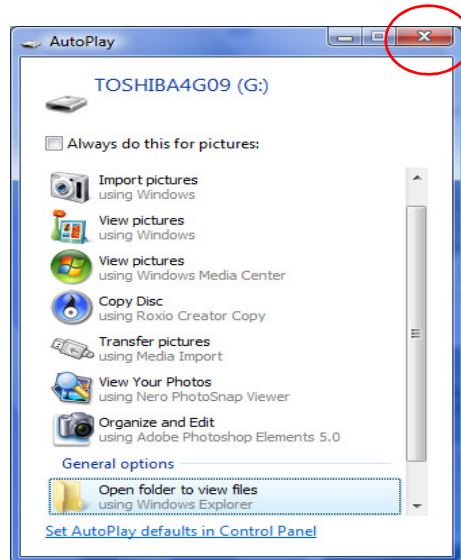


PSE 15 Uploading Pictures From Your Camera or Card Reader Using Photoshop Elements

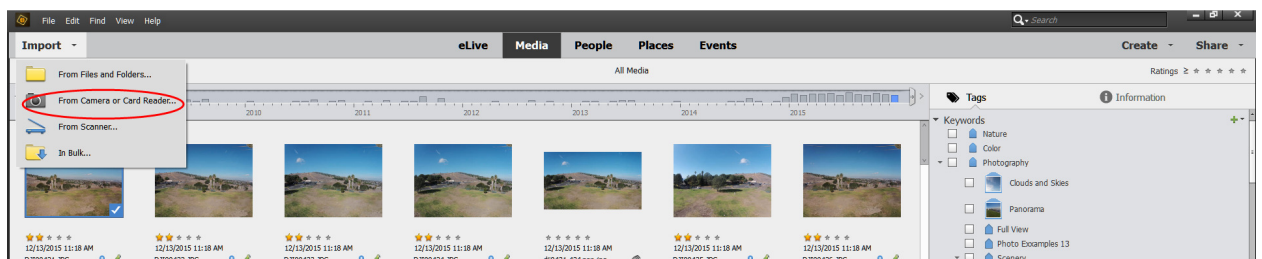
This exercise covers uploading images from your digital camera or card reader to your computer using the Organizer of Photoshop Elements. What follows assumes that you have previously set the desired PSE preferences.

1. Open the Organizer of Photoshop Elements.
2. Connect your camera or a card reader to one of your computer's USB connectors **before** turning on your camera or inserting your card into the reader.
3. For a **camera, put it in the normal Playback mode and turn it on if required**. If you are using a card reader, insert the memory card into the appropriate slot.
4. The **Windows Auto Play** dialog box similar to the one below **may appear**. If/when it does, **click on the red X** in the upper right hand corner to close it.

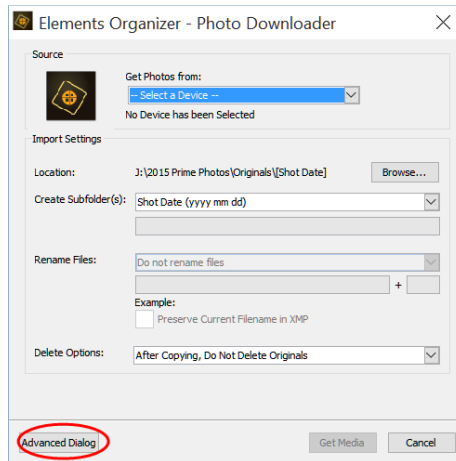


Auto Play Dialog With Camera/Card Reader Connected

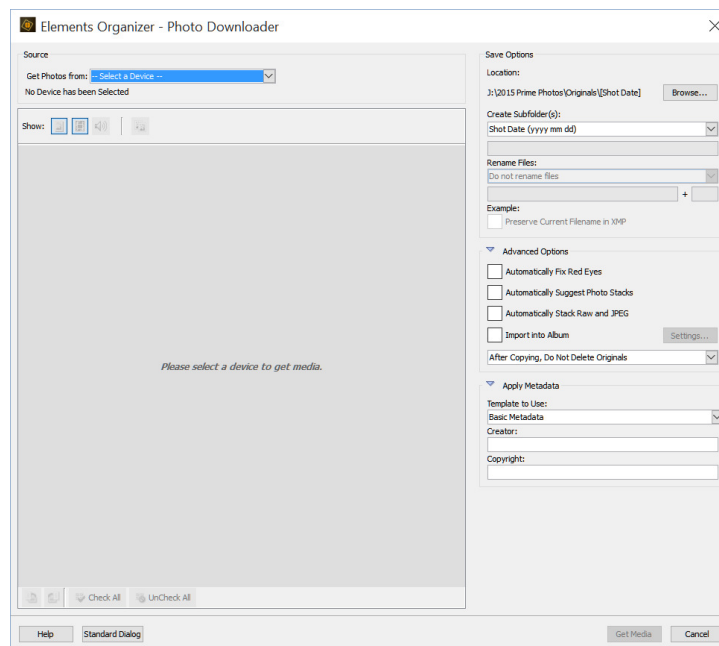
5. On the Menu bar, click on **Import > From Camera or Card Reader** as shown below.



6. The simplified Photo Downloader dialog may open as shown in the figure below. If it does, click on the Advanced Dialog button as shown in the figure.

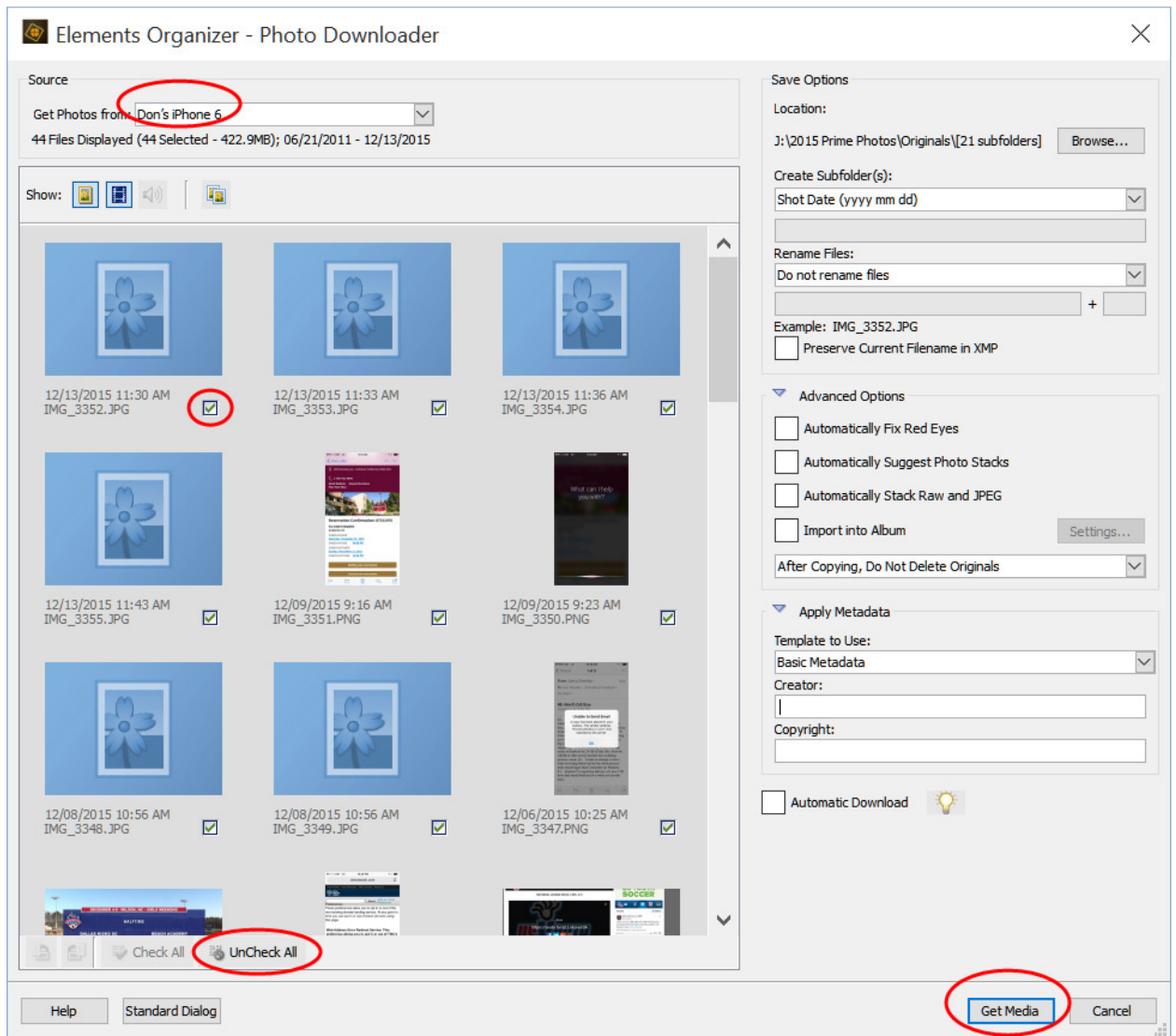


The Advanced Dialog is shown in the next figure.



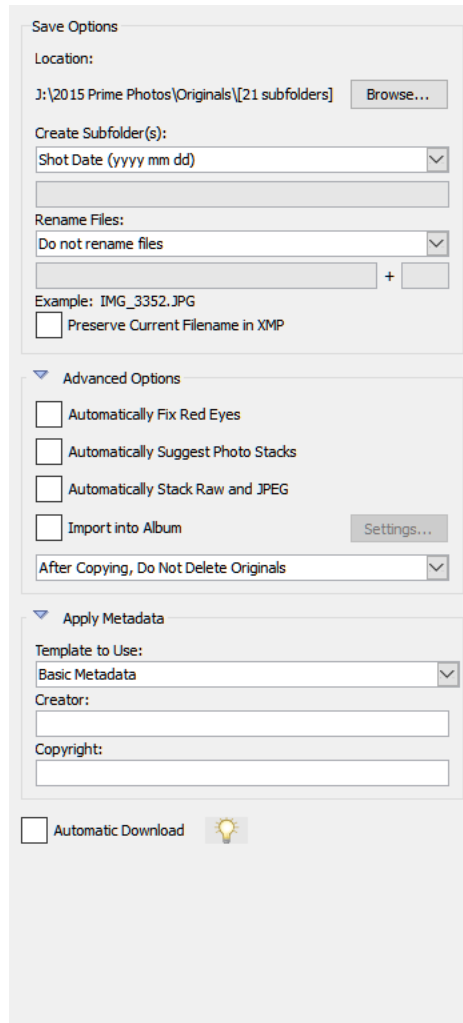
7. You should then see a bright blue bar at the top of the dialog that says Select Your Device. Click on the down arrow and select your camera/card reader in the drop down list. PSE 15 immediately reads your card reader/camera and displays thumbnails of each of the images it finds as shown in the figure below. Note, in the figure below, I have connected my iPhone to the computer. PSE 15 treats it as a camera. Also note that for an iPhone/iPad, it displays all of the photos and videos in your Camera Roll.

Also, since you will probably have far more photos on your iPhone than you want to upload, you will probably want to click on Uncheck All in the lower left of the dialog, and then click on the small square by each photo you want to upload.

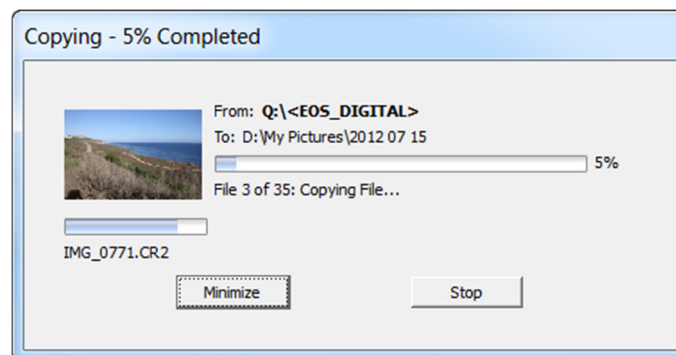


Note, no images have been copied to the computer yet.

8. Each of the thumbnails has a small white box just outside of its lower right corner which has a green check indicating that image will be copied to the computer. To skip any images, click on its white box to remove the green check.
9. On the right side of the dialog are the options (storage location, red eye removal etc.) that will be used during the upload process. For our purposes, we will **assume that you have already set these using the desired Edit > Preferences** and are satisfied with the choices shown. See the figure below.



10. Click on the Get Media button in the lower right corner of the dialog to begin copying the photos to your computer.



11. After a short time, a small brief message appears for a second or so indicating how many images were imported. The imported images are then displayed in the grid and are ready for tagging etc.

12. You can now disconnect the camera or card reader in the appropriate manner. For an iPhone/iPad, you can simply remove the device.